

SBV-A14B

Back Box



Key Features

- Product dimensions / weight : $\varnothing 144.0 \times 51.0 \text{mm}$ ($\varnothing 5.67 \times 2.01''$), 440g
- Mount Screw size : TR20
- Conduit hole : 19.1mm ($3/4''$) (M25)

SBV-A14B

Back Box



Specifications

Mechanical	
Color	White
Material	Aluminum
RAL code	RAL9003
Product dimensions / weight	Ø144.0x51.0mm(Ø5.67x2.01"), 440g
Mount Screw size	TR20
Conduit hole	19.1mm(3/4") (M25)
Supported products	ANV-L6012R/L6082R/L7012R/L7082R ANO-L6012R/L6022R/L6082R/L7012R/L7022R/L7082R ANE-L6012R/L7012R

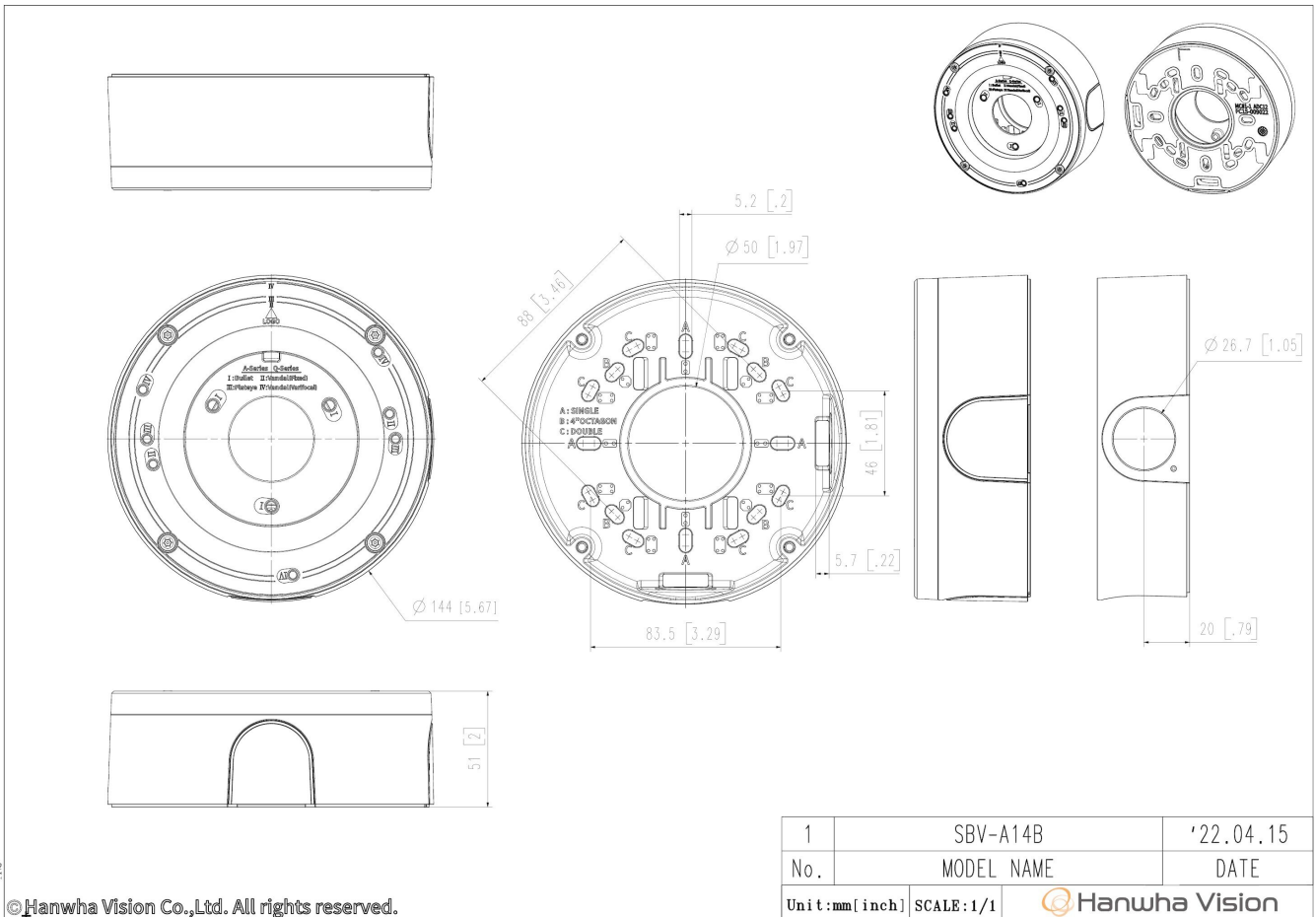
SBV-A14B

Back Box



CAD

Unit:mm [inch]



A.2

© Hanwha Vision Co.,Ltd. All rights reserved.