

Product Code

F09534

1/W MILO VIDEO PANEL WITH PROX MEET



Reference

9534

EAN

8424299095349

Description.

Description

1L MEET VIDEO CARD PoE available in two different versions: with Mifare proximity reader or without reader.

SPECIFICATIONS

- Aluminum profile
- Tempered glass
- High definition color camera
- Low consumption
- Extended operating range
- Modular Linux-based platform
- Integrated Access Control (only in Ref.9534 with integrated proximity reader)
- Remote Firmware Update

FUNCTIONS

- CALL TO APARTMENT Visitors can call the apartment associated with the plate.
- CALL TO CONCIERGE It is possible to make calls for assistance to the concierge associated with the panel.

REFERENCES

- Ref. 9533 1L MEET VIDEO CARD
- Ref. 9534 1L MEET VIDEO CARD (+ PROXIMITY READER)
- Ref. 9543 FLUSH BOX – S MEET
- Ref. 9519 SURFACE BOX – S MEET (Stainless steel)

Not compatible with Elevator Control function

Technical Details

System:

- CPU: ARM Cortex-A7 1.2GHz
- FLASH: 128M
- SDRAM: 64M

Audio:

- G.711 codec
- Audio level 17.7 dB

Camera:

- 1/3" CMOS Color
- 120° diagonal lens: 100°(H), 52°(V)
- 1 Mega Pixels
- 0.5 LUX of minimum illumination.
- AWB

LED:

- White LED
- LM 60 mA Min. 24, Type. 26
- Angle 201/2: 120

Consumption:

- Standby: 125mA
- Operating: 250mA

Operating voltage:

- 12 Vdc Connectivity:

Connector

- Ethernet RJ-45
- Connector for exit button and door open sensor
- Door opening relay connection NO, NC, C
- Built-in web server for remote configuration and management.

Funcionament condition:

- Temperature: -40°C – 55°C
- Humidity: 10 – 90%
- IP54
- IK 07

CONNECTIONS

- RJ-45 10/100 Base-T Ethernet
- +, -, : 12 Vdc Power input
- BS, -, NA, SP: Exit button and door open sensor
- NO, C, NC: Door opening relay terminals
- 485+, 485-: RS485 serial port

Details.

Product measurements (height x width x depth) mm	Weight (kg)	Packaging measurements (height x width x depth) cm	Video Door Entry system Technologie
118x183x49	0.804	8x25,5x16,5	MEET

Access Control Technology

PROXIMIDAD

Manuals

- 970137Eg Man Inst Placa 1L MEET V07_22.pdf
- https://d7rh5s3nxdmp4.cloudfront.net/CMP2008/files/970137lg%20Man%20Inst%20Placa%201L%20MEET%20V07_22.pdf, ,
- https://docs.fermax.com/manuales/970139Ec%20Man%20Inst%20APP%20MEET%20V04_22.pdf, ,
- 970139lc Man Inst APP MEET V04_22.pdf
- 970139Pc_Man_Inst_APP_MEET_V02_24.pdf

Declaration of conformity

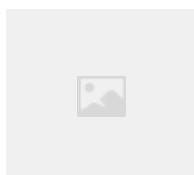
- [DOCF09534EN.pdf](#)

Accessories



F09543

MILO 1/W PANEL FLUSH BOX MEET



F09518

MILO 1W PANEL SURFACE BOX
MEET