

Product Code

F01455

# MARINE DIGITAL VIDEO PANEL MEET



Reference

EAN

1455

8424299014555

## Description.

---

### Description

The MARINE MEET panel is FERMAX's vandal-proof door entry and video door entry panel.

Made of 316L stainless steel, it is 3mm thick. It is a very resistant plate due to its high quality, both in materials and in production and assembly processes.

Its compact and sealed design guarantees protection against external agents IP54 and a degree of resistance against impacts of IK09.

### 1.3MP HD CAMERA

The camera has a high definition image, giving it excellent video quality. The camera is equipped with LED lighting for low light conditions. Additional RTSP IP video output.

### ADAPTED FOR EVERYONE

- The camera allows a viewing angle of 128°H and 70°. This facilitates the installation and use of the plate in the case of visitors in a wheelchair.
- With Braille engraving that allows the call key to be identified by means of an engraving on the surface of the plate.

### FACIAL RECOGNITION

The proximity reader with MIFARE technology allows the door to be opened by means of a code on the panel or by sending the code to an external access controller that validates the access.

### ADVANCED DISPLAY

- Welcome with a logo or useful information on the screen for the visitor.
- We can search for the name or apartment we want to call thanks to the electronic directory.
- Compatible with Lift Control function.

### Details.

---

Product measurements (height x width x depth) mm	Weight (kg)	Packaging measurements (height x width x depth) cm	Video Door Entry system Technologie
410 x 159 x 49	2.5	46,8x10x21	MEET

Access Control Technology

### PROXIMIDAD

### Manuals

- 970189c\_Guia\_rap\_Instalacion\_Placa\_MARINE\_V06\_24.pdf
- 970190Ad\_Manual\_instalador\_Placa\_MARINE\_MEET\_V07\_22.pdf
- 970190Ed\_Manual\_instalador\_Placa\_MARINE\_MEET\_V07\_22.pdf
- 970190Fd\_Manual\_instalador\_Placa\_MARINE\_MEET\_V07\_22.pdf
- 970190Id\_Manual\_instalador\_Placa\_MARINE\_MEET\_V07\_22.pdf
- 970190Pd\_Manual\_instalador\_Placa\_MARINE\_MEET\_V02\_24.pdf
- 970190Rd\_Manual\_instalador\_Placa\_MARINE\_MEET\_V07\_22.pdf
- 970190Td\_Manual\_instalador\_Placa\_MARINE\_MEET\_V07\_22.pdf

Declaration of conformity

- DOCF01455EN.pdf

## Accessories



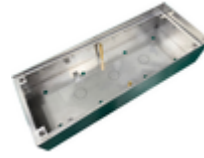
F01456

MARINE DIRECTORY PANEL MEET



F01459

MARINE PANEL FLUSH BOX MEET



F01458

MARINE PANEL SURFACE BOX MEET