

SBP-140CMT

Tile Grid Ceiling Mount

FC

UL LISTED

CE

EAC

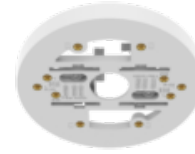
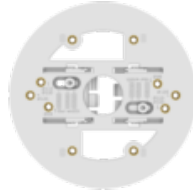


Key Features

- Color : White
 - Material : Plate : Polycarbonate(PC), Rail : Aluminum
 - Product dimensions / weight : $\phi 140 \times 27.5 \text{mm}$ ($\phi 5.51" \times 1.08"$) / 000g (0.00lb)
- ※ Totally 4pcs included on package

SBP-140CMT

Tile Grid Ceiling Mount



Specifications

Environmental

Operating Temperature / Humidity -10°C~+45°C (+14°F~+113°F) / 5~90% RH (non-condensing)

Storage Temperature / Humidity -30°C~+60°C (-22°F~+140°F) / 0~90% RH

Mechanical

Color White

Material - Plate : Polycarbonate(PC)
- Rail : Aluminum

RAL code RAL9003

Product dimensions / weight ø140x27.5mm (ø5.51"x1.08") / 108g (0.24lb)
※ Totally 4pcs included on package

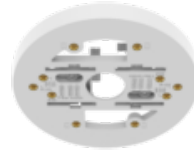
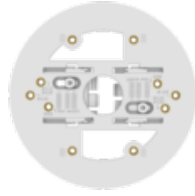
Mount Screw size TR20

Max. load 2.5kg (5.51lb)

Supported products QNV-C8011R/C8012/C9011R, QNV-C8083R/C9083R, ANE-L6012R/L7012R/L7012L,
XND-C6083RV/C7083RV/C8083RV/C9083RV
※ For further compatible models, please visit our website or use Toolbox

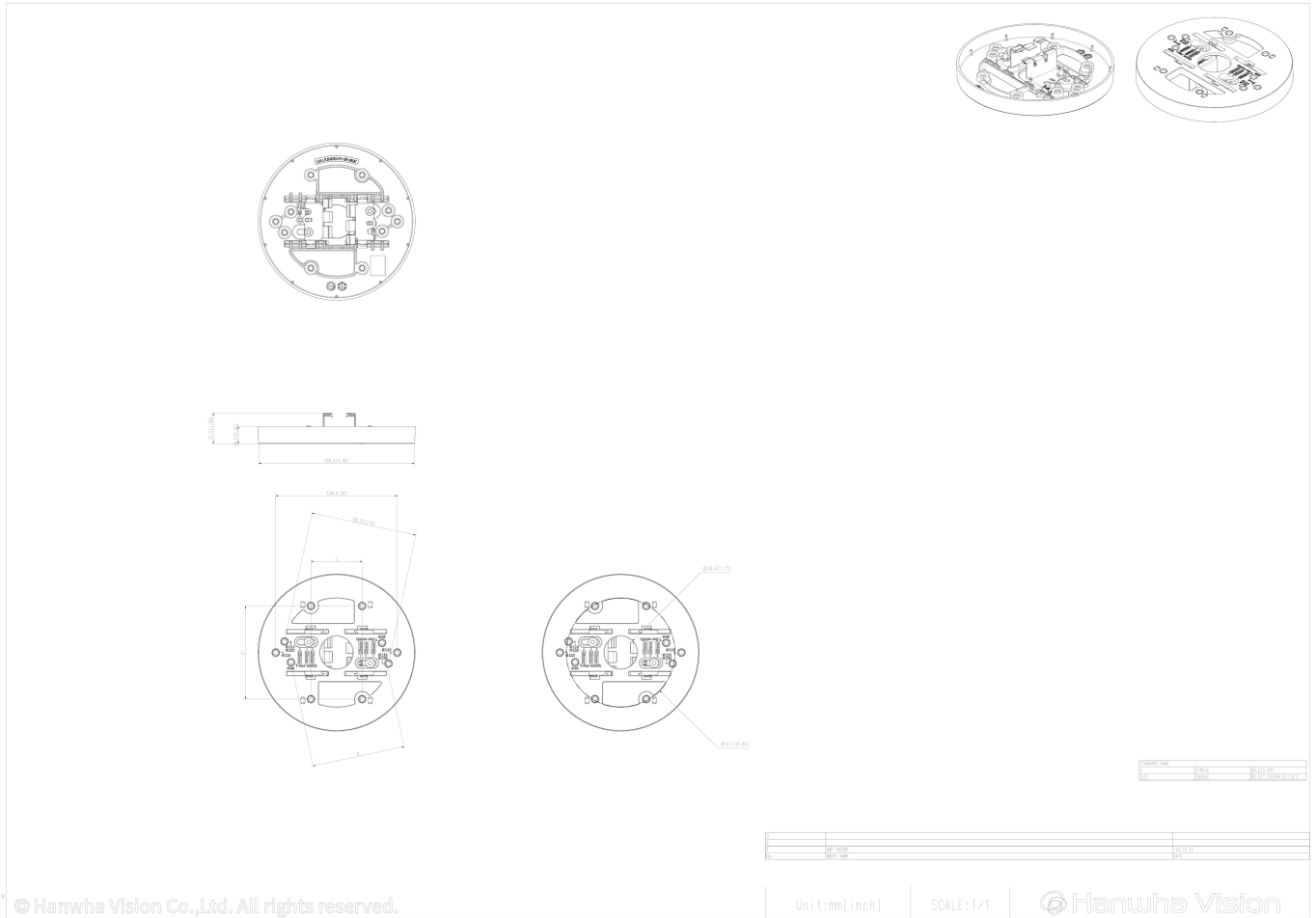
SBP-140CMT

Tile Grid Ceiling Mount



CAD

Unit:mm [inch]



© Hanwha Vision Co.,Ltd. All rights reserved.

Unit:mm [inch]

SCALE:1/1

© Hanwha Vision