

@lhua
TECHNOLOGY



**LET'S
GO
OUT
AND
EXPLORE!**



**Outstanding
Image**



**Long
Battery Life**



**Wi-Fi Hotspot
& App**



**Intelligent
Functions**



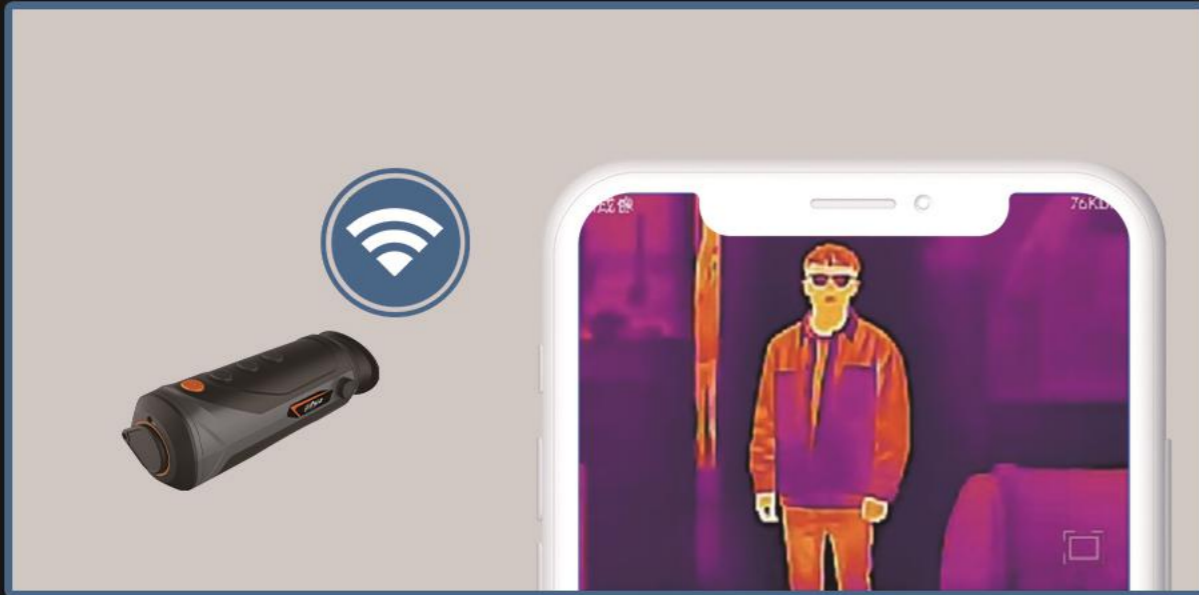
**Compact
Structure Design**

LET'S GO OUT AND EXPLORE! M Series Thermal Monocular

Highlights

• Wi-Fi Hotspot & App

The monocular and smartphone can be connected via a built-in Wi-Fi hotspot for real-time preview and quick operation in the App.



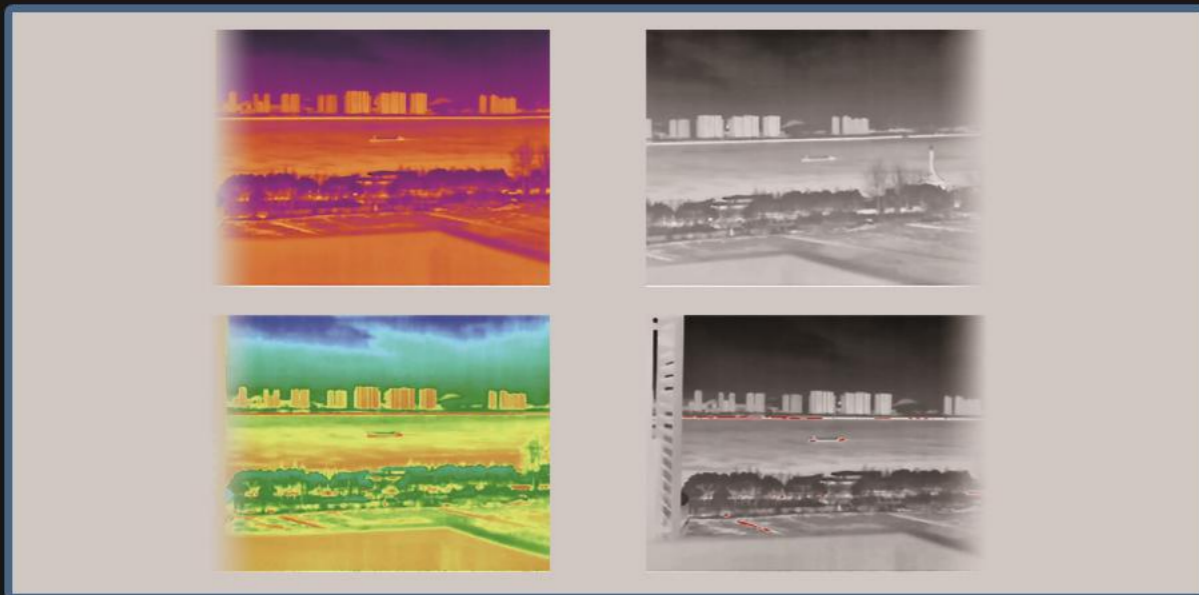
• Distance Measurement

By selecting the target type and placing the line on the top and bottom of the target, the approximate distance of the target can be obtained.



• Four Colour Palettes

It offers a choice of four color palettes to meet your observation needs in different scenarios. White hot, rainbow, iron red and alarm.



• Compact Structure Design

It adopts human body engineering mechanical design, with appropriate hand feel. It also meets the IP67 protection rating, passes the 2-meter drop test.



Application Scenarios



Wildlife Conservation



Rescue Mission



Security Patrol



Hunting

DAHUA TECHNOLOGY

Add: No.1199 Bin'an Road, Binjiang District, Hangzhou, China. 310053

Email: overseas@dahuatech.com

Website: www.dahuasecurity.com



Youtube



LinkIn



Partner App



Website