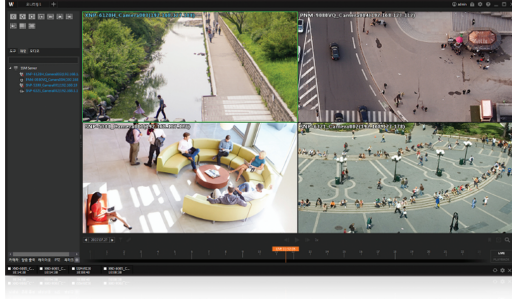


# Wisenet SSM-Core Server

Wisenet SSM's Basic Server



## Key Features

- Single Core Server for easy installation
  - Easy and fast conversion of live and playback
  - Various Intelligent Video Analysis
  - Support for encryption of Stored video
  - Quick response through rule-based event action
  - Real-time monitoring
  - Maximum 4 monitors, 132CH  
(Single monitor - Maximum 132CH)
  - Camera connection for multiple server domains
  - NVR/DVR : Maximum 10,000CH,  
SSM Server : Maximum 2,048CH
  - Server failover support
  - Schedule Backup via client
- ※ Wisenet SSM version 2.10.6 and onwards are not compatible with Wisenet ACS 1.4 or below.

## Wisenet SSM-Core Server

DEVICE		
General	Supported Device	<b>Hanwha Techwin</b> : Network camera, Encoder, NVR, DVR, Decoder, Controller Others : Network camera, Encoder through ONVIF
	Camera Protocol	SUNAPI, ONVIF(Profile S)
	Camera Connection	Up to 3,000 channels
	Access Control Management	WACS (Wisenet Access Control Software)
System Management	Centralized License Management	45 days free trial
	Server Clustering	Data sharing, Failure management
	System Dashboard	Real-time system status monitoring
	User Management	Configurable user group, LDAP supported Device access authority, Feature level authority
	Security	SSL, Database encryption Login lockdown, Multi-level user access authority
Device Management	Federation	Multi-tier domain federation, Max 100 domains
	Centralized Device Configuration	Auto / Manual discovery, Device and add-on server registration
Event Management	Maintenance	Setup file backup / restore, Device firmware update
	Event Configuration	4 levels event priority, Configurable event color
Site / Layout / Map Design	Event Action	Rule based event and triggering action setup Instant viewer pop-up, Alert sound, E-mail notification
	Multi-Layered Site Configuration	Flexible site design, Site access authority
	Layout & Pattern	User defined layout and tile pattern
	Map	2D image map
OPTIONAL FEATURE		
Recording Module	Max. Camera Per Server	Up to 128 channel
	Recording Performance	Up to 400Mbps (@4 HDD)
	Recording Mode	Manual, Continuous, Event, Schedule
	Pre / Post Event Recording	Pre : 10 ~ 60 sec / Post : 1,200 sec
	RAID	Hardware RAID controller required
Recommended specification	Etc.	ARB (Auto recovery backup) from camera edge storage, Recording retention time, iSCSI support
		CPU : Intel i7-4770@3.40GHz RAM : 16GB minimum Ethernet : 1Gbps x 2ea OS : Windows 7, 8, 8.1, 10 (64bit) HDD - For S/W Install : SDD, 60GB available hard drive space - For Recording : Extra storage needed * SATA2 7200rpm (64MB Cache) x 4ea * RAID, iSCSI : RAID5, 8Bay, HW RAID Controller (AF support)

\* The latest product information / specification can be found at [hanwha-security.com](http://hanwha-security.com)

\* Design and specifications are subject to change without notice.

\* Wisenet is the proprietary brand of **Hanwha Techwin**, formerly known as Samsung Techwin.