



SBC-165W

White Skin



Key Features

- Material : Poly Carbonate
- Dimensions : 54.9(W)x47.6(D)x170.9(H)mm(2.16x1.87x6.73")
- Weight: 45g(0.09lb)

SBC-165W

White Skin



Specifications

Environmental

Operating Temperature / Humidity	-30°C~+55°C(-22°F~+131°F) / 0~100% RH
Storage Temperature / Humidity	-30°C~+55°C(-22°F~+131°F) / 0~100% RH

Mechanical

Color	White
Material	Poly Carbonate
Product dimensions / weight	54.9(W)x47.6(D)x170.9(H)mm(2.16x1.87x6.73"), 45g(0.09lb)
Supported products	TID-600R

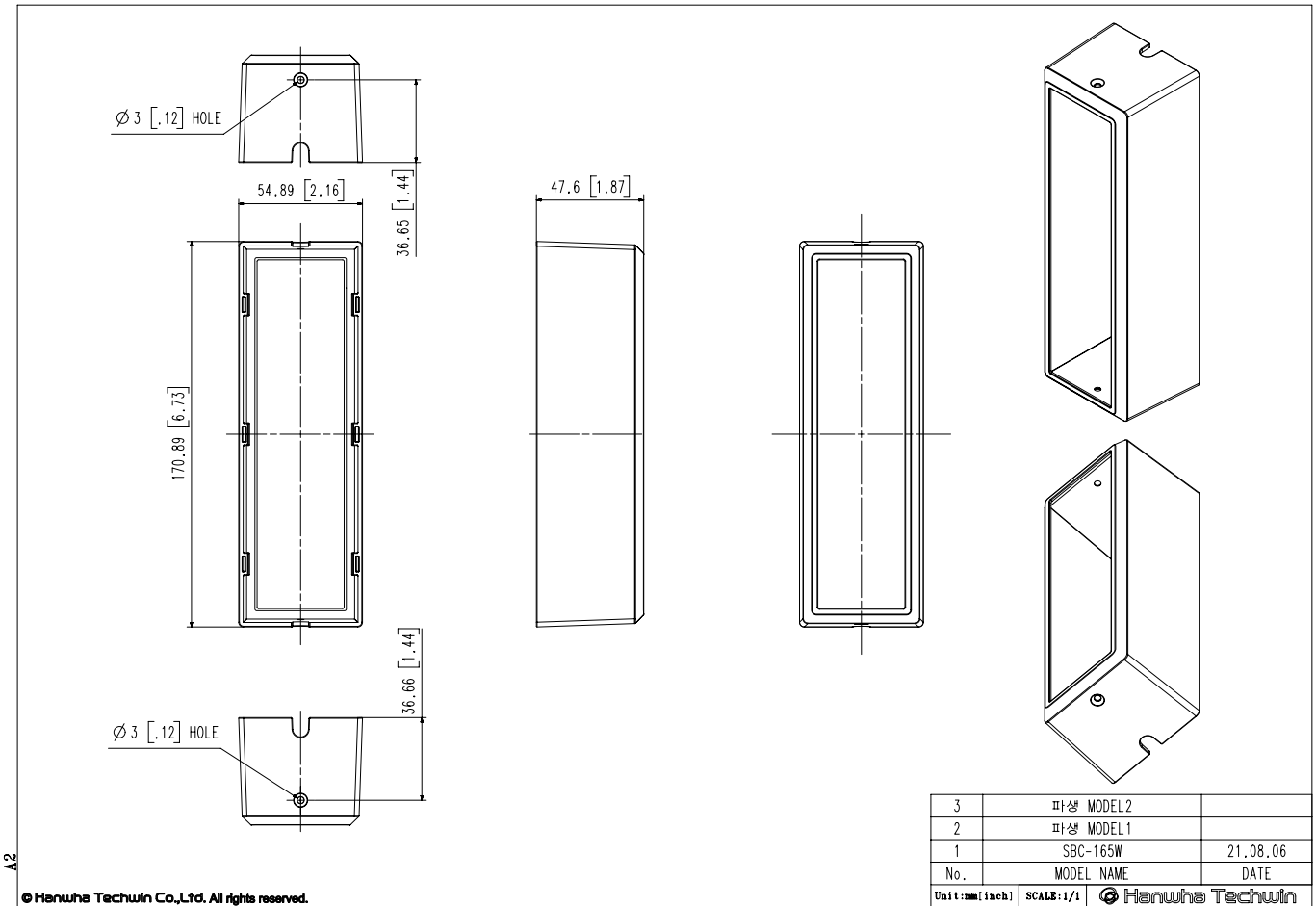
SBC-165W

White Skin



CAD

Unit: mm [inch]



A2

© Hanwha Techwin Co., Ltd. All rights reserved.