



Network

Dome

XNV-8081R

5M H.265 IR Dome Camera



Key Features

- Max. 5Megapixel resolution
- 0.07Lux@F1.4 (Color), 0Lux (B/W, IR LED on)
- Day & Night (ICR), WDR (150dB / 120dB)
- Hallway View, WiseStreamII Support
- Video & audio analytics, Audio playback
- DIS and shock detection with built-in gyro sensor
- Modular structure, PoE, 12VDC, 24VAC (Optional)
- IP66/IP67, IK10+, NEMA4X

Compatible Accessories (Optional)



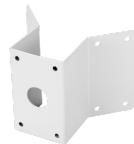
SBC-180B



SBP-300LMW



SBP-300WMW1



SBP-300KMW



SBP-300BW



SBP-300PMW



SBP-300WMW



SBP-390WMW2



SPB-VAN85W



SBP-300NBW



SBP-300CMW



SBP-187HMW

XNV-8081R

5M H.265 IR Dome Camera



Specifications

| | |
|-----------------------------|--|
| Video | |
| Imaging Device | 1/1.8" 6MP CMOS |
| Resolution | 2560x1920, 2560x1440, 1920x1080, 1600x1200, 1280x1024, 1280x960, 1280x720, 1024x768, 800x600, 800x448, 720x576, 720x480, 640x480, 640x360, 320x240 |
| Max. Framerate | H.265/H.264: Max. 30fps/25fps(60Hz/50Hz)\nMJPEG: Max. 30fps/25fps(60Hz/50Hz) |
| Min. Illumination | Color: 0.07Lux(F1.3, 1/30sec)\nBW: 0Lux(IR LED) |
| Video Out | CVBS: 1.0 Vp-p / 75Ω composite, 720x480(N), 720x576(P) for installation\nUSB: Micro USB Type B, 1280x720 for installation |
| Lens | |
| Focal Length (Zoom Ratio) | 3.9~9.4mm(2.4x) motorized varifocal |
| Max. Aperture Ratio | F1.3 |
| Angular Field of View | H: 92.1°(Wide)~38.7°(Tele), V: 67.2°(Wide)~29.0°(Tele), D: 119.9°(Wide)~48.6°(Tele) |
| Min. Object Distance | 0.5m(1.64ft) |
| Focus Control | Simple focus |
| Lens Type | DC auto iris, P iris |
| Pan / Tilt / Rotate | |
| Pan / Tilt / Rotate Range | 0°~360° / -45°~85° / 0°~355° |
| Operational | |
| Camera Title | Displayed up to 85 characters |
| Day & Night | Auto(ICR) |
| Backlight Compensation | BLC, HLC, WDR, SSSDR |
| Wide Dynamic Range | 120dB |
| Digital Noise Reduction | SSNR V |
| Digital Image Stabilization | Support(built-in gyro sensor) |
| Defog | Support |
| Motion Detection | 8ea, 8point polygonal zones |
| Privacy Masking | 32ea, polygonal zones\n - Color: Grey/Green/Red/Blue/Black/White\n - Mosaic |
| Gain Control | Low / Middle / High |
| White Balance | ATW / AWC / Manual / Indoor / Outdoor |
| LDC | Support |
| Electronic Shutter Speed | Minimum / Maximum / Anti flicker (2~1/12,000sec) |
| Video Rotation | Flip, Mirror, Hallway view(90°/270°) |
| Analytics | Defocus detection, Directional detection, Fog detection, Face detection, Motion detection, Digital auto tracking, Appear/Disappear, Enter/Exit, Loitering, Tampering, Virtual line, Audio detection, Sound classification, Shock detection |
| Business Intelligence | People counting, Queue management, Heatmap |
| Alarm I/O | Input 1ea / Output 1ea |
| Alarm Triggers | Analytics, Network disconnect, Alarm input |

| | |
|---------------------------------------|---|
| Alarm Events | File upload via FTP and e-mail\nNotification via e-mail\nSD/SDHC/SDXC or NAS recording at event triggers\nAlarm output\nHandover\nAudio playback |
| Audio In | Selectable(mic in/line in),\nSupply voltage: 2.5VDC(4mA), Input impedance: 2K Ohm |
| Audio Out | Line out, Max. output level: 1Vrms |
| IR Viewable Length | 50m(164.04ft) |
| Network | |
| Ethernet | RJ-45(10/100BASE-T) |
| Video Compression | H.265/H.264: Main/Baseline/High, MJPEG |
| Audio Compression | G.711 u-law /G.726 Selectable\nG.726(ADPCM) 8KHz, G.711 8KHz\nG.726: 16Kbps, 24Kbps, 32Kbps, 40Kbps\nAAC-LC: 48Kbps at 16KHz |
| Smart Codec | Manual(5ea area), WiseStream II |
| Bitrate Control | H.264/H.265: CBR or VBR\nMJPEG: VBR |
| Streaming | Unicast(20 users) / Multicast\nMultiple streaming(Up to 10 profiles) |
| Protocol | IPv4, IPv6, TCP/IP, UDP/IP, RTP(UDP), RTP(TCP), RTCP,RTSP, NTP, HTTP, HTTPS, SSL/TLS, DHCP, FTP, SMTP, ICMP, IGMP, SNMPv1/v2c/v3(MIB-2), ARP, DNS, DDNS, QoS, PIM-SM, UPnP, Bonjour, LLDP, SRTP |
| Security | HTTPS(SSL) Login Authentication\nDigest Login Authentication\nIP Address Filtering\nUser access Log\n802.1X Authentication(EAP-TLS, EAP-LEAP) |
| Application Programming Interface | ONVIF Profile S/G/T\nSUNAPI(HTTP API)\nWisenet open platform |
| General | |
| Web Viewer | Supported OS: Windows 7, 8.1, 10, Mac OS X 10.10, 10.11, 10.12\nRecommended Browser: Google Chrome\nSupported Browser: MS Explore11,~MS Edge, Mozilla Firefox(Window 64bit only), Apple Safari(Mac OS X only) |
| Edge Storage | Micro SD/SDHC/SDXC 2slot 512GB |
| Memory | 1024MB RAM, 256MB Flash |
| Environmental & Electrical | |
| Operating Temperature / Humidity | -50°C ~ +60°C (-58°F ~ +140°F) / Less than 90% RH\n* Start up should be done at above -35°C |
| Storage Temperature / Humidity | -50°C ~ +60°C (-58°F ~ +140°F) / Less than 90% RH |
| Certification | IP66/IP67/IP6K9K, IK10+, NEMA4X |
| Input Voltage | PoE(IEEE802.3af, Class3), 24VAC(Optional), 12VDC |
| Power Consumption | PoE: Max 12.95W, typical 10.90W\n12VDC: Max 11.7W, typical 8.90W\n24VAC: Max 14.9W, typical 11.30W |
| Mechanical | |
| Color / Material | White / Aluminum |
| RAL Code | RAL9003 |
| Product Dimensions / Weight | Ø180x125mm(7.09x4.92"), 1.75kg(3.86 lb) |

XNV-8081R

5M H.265 IR Dome Camera



CAD

Unit:mm [inch]

