



Analog

Dome

HCD-6010

2MP Analog Dome Camera



Key Features

- Full HD (1,920 x 1,080) Resolution
- 0.27Lux@F2.0 (Color), 0.017Lux (B/W)
- Built-in 2.8mm fixed lens
- Day & Night (ICR), WDR (120dB)
- SSSNRIV, Motion detection
- Transmission distance max.500m

Compatible Accessories (Optional)



SBP-300HM7



SPB-IND12



SPG-IND12B



SBP-120WM



SBP-390WM2



SBP-300WM



SBP-300WM1



SBP-300NB



SBP-300KM



SBP-300B



SBP-300LM



SBP-300CM



SBP-300PM



HCD-6010

2MP Analog Dome Camera

Specifications

Video

Imaging Device	1/2.8" 2M CMOS
Resolution	1920 x 1080
Max. Framerate	30fps @1080p(N), 25fps @ 1080p(P)
Min. Illumination	Color : 0.27Lux (F2.0, 1/30sec) B/W : 0.017Lux
Video Out	BNC(AHD / TVI / CVI / CVBS Selectable)
Video Transmission Distance	500m(5C2V Coaxial Cable)

Lens

Focal Length (Zoom Ratio)	2.8mm fixed focal
Max. Aperture Ratio	F2.0
Angular Field of View	H: 113.7° / V: 61.5° / D: 134.5°
Min. Object Distance	0.5m(1.64ft)
Focus Control	Manual

Pan / Tilt / Rotate

Pan / Tilt / Rotate Range	0°~350° / 0°~67° / 0°~355°
---------------------------	----------------------------

Operational

Camera Title	Displayed up to 15 characters
Day & Night	Auto(ICR)
Backlight Compensation	BLC, HLC, WDR
Wide Dynamic Range	120dB
Digital Noise Reduction	SSNRIV
Defog	Support
Motion Detection	4ea
Privacy Masking	8ea, rectangular zones
Gain Control	Low / Middle / High / Very High
White Balance	ATW / AWC / Manual / Indoor / Outdoor
Electronic Shutter Speed	1 ~ 1/12,000sec
Video Rotation	H-Rev / V-Rev
Analytics	Motion detection
Coaxial Protocol	ACP(AHD Coax Protocol), TCP(TVI Coax Protocol), CCP(CVI Coax Protocol) CVBS : Pelco-C(Coaxitron)

Environmental & Electrical

Operating Temperature / Humidity	-10°C ~ +55°C(+14°F ~ +131°F) / Less than 90% RH
Input Voltage	12VDC
Power Consumption	Max 3.6W

Mechanical

Color / Material	Ivory / Plastic
Product Dimensions / Weight	Ø110 x 86mm(4.33 x 3.39"), 221g(0.49 lb)

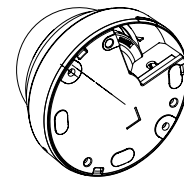
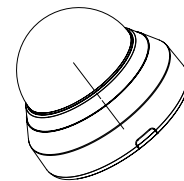
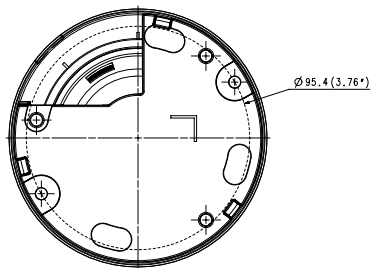
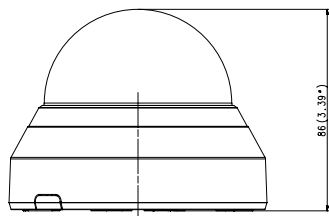
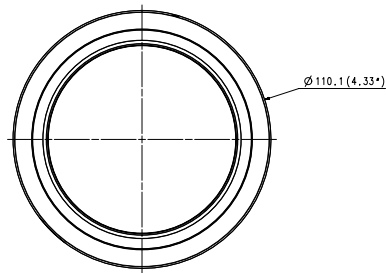
HCD-6010

2MP Analog Dome Camera



CAD

Unit: mm [inch]



SCD-6023R
Appearance Drawing
Unit:mm(inch)