



SPI-BRM1

BCR Camera LED module

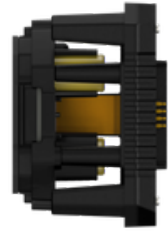
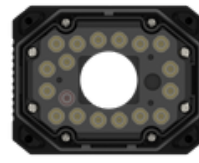


Key Features

- Red LED Module for 3MP BCR Camera
- Power Consumption: 6.9 W
- LED Quantity: 16EA
- IP66/IP67(camera and front cover must be assembled)
- Operating Temperature / Humidity: -40°C~+55°C / 0~95% RH
- Compatible Camera: TNS-7000M
Compatible Lens: SLM-5M08

SPI-BRM1

BCR Camera LED module



Specifications

Environmental

Operating Temperature / Humidity	-40°C~+55°C / 0~95% RH
Storage Temperature / Humidity	-40°C ~ +60°C / Less than 95% RH
Certification	FCC, UL, CE, KC, IEC 62471 IP66/IP67(camera and front cover must be assembled)

Electrical

Input Voltage	24 VDC \pm 10%
Power Consumption	6.9 W

Mechanical

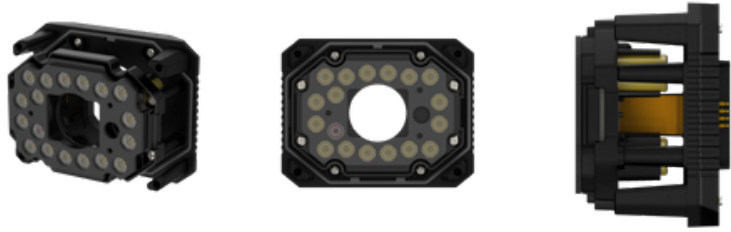
Product dimensions / weight	W101.2 x D53.8 x H78.2 / 200g
Supported products	TNS-7000M

LED

Wavelength	617nm
Quantity	16EA
Angle	FWHM : 43° 10~% : 70°

SPI-BRM1

BCR Camera LED module



CAD

Unit: mm [inch]

Dimensions shown in CAD drawings:

- Top view width: 101.2 [3.98]
- Top view height: 78.2 [3.08]
- Side view height: 50 [1.97]
- Side view depth: 3.8 [.15]

4	SPI-BBM0, SPI-BBM1, SPI-BBW0 SPI-BRMO, SPI-BRM1, SPI-BRW0	'25.11.28
3	SPI-BBNO, SPI-BRNO	'25.09.30
2	SPI-BWMO, SPI-BWM1, SPI-BWVO	'25.08.13
1	SPI-BWNO	'25.06.02
No.	MODEL NAME	DATE
Unit: mm [inch] SCALE: 1/1		Hanwha Vision

© Hanwha Vision Co., Ltd. All rights reserved.