

SHD-1000F1



SHD-1000F1

In-ceiling Mount



Key Features

- Color : White
- Materials : PC(Polycarbonate)
- Dimensions (WXH) : ø137x131mm (ø5.39x5.15")
 - ※ Ceiling hole size : ø119mm (ø4.69")
- Weight : 250g (0.55lb)
- Max. load : 1.5kg (3.31lb)
 - ※ Maximum load of ceiling board : 3kg (6.61lb)

Compatible Devices



QNF-9010



QNF-8010

SHD-1000F1

In-ceiling Mount



Specifications

Mechanical	
Color	White
Material	PC(Polycarbonate)
RAL code	RAL9003
Product dimensions / weight	ø137x125mm(ø5.39x4.92") / 250g(0.55lb)
Tile thickness	10~60mm(0.4~2.4")
Max. load	1.5kg(3.31lb) ※ Maximum load of ceiling board: 3kg(6.61lb)
Supported products	QNF-9010, QNF-8010

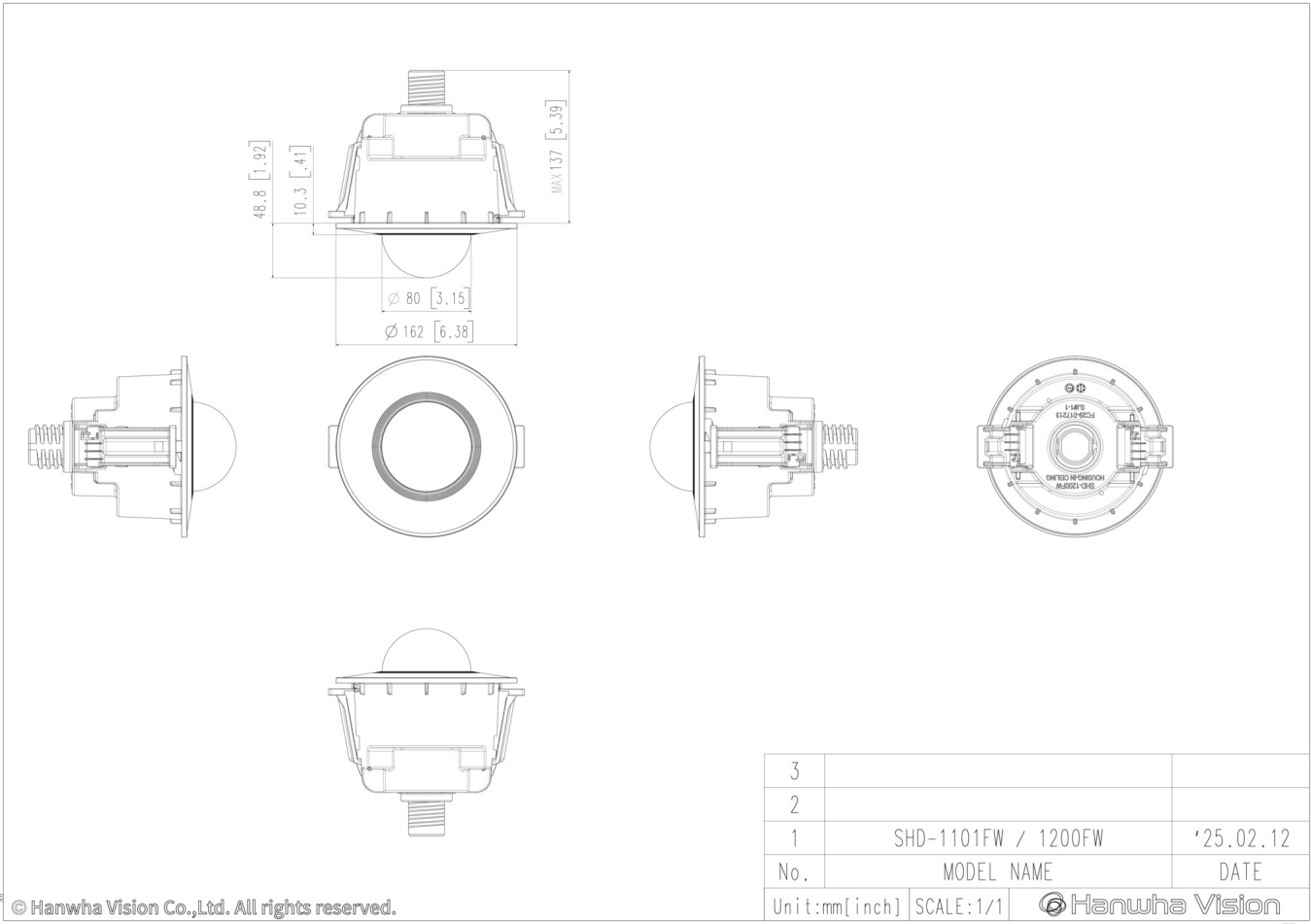
SHD-1000F1

In-ceiling Mount



CAD

Unit: mm [inch]



© Hanwha Vision Co.,Ltd. All rights reserved.