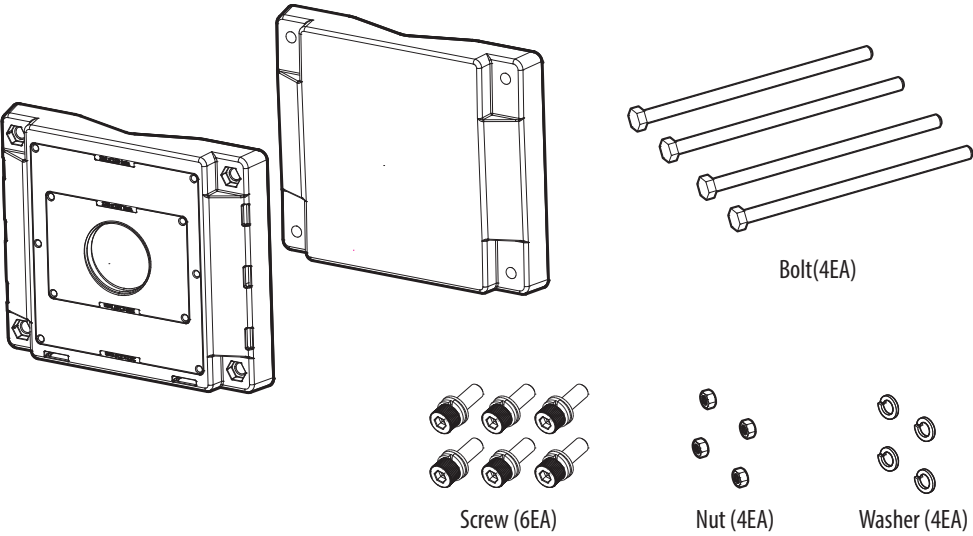


Pole Mount

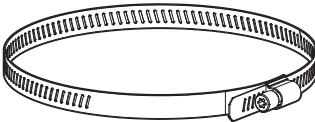
SBP-150PMW



Package



Optional Accessory

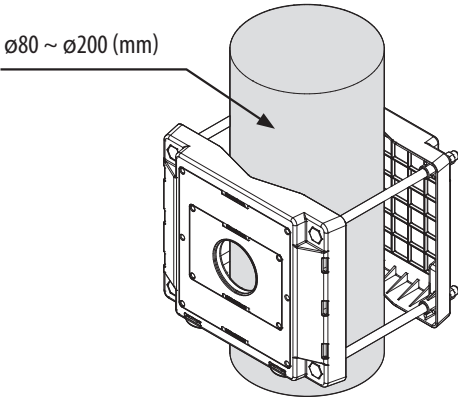


Steel Strap:
SBP-150S (1500mm)

PT01-006144B

Installation Precautions

- Make sure that the installation place can endure at least 4 times of the total weight of the Pole Mount and Camera.
- Each anchor screw must be capable of withstanding an extraction force of 700 kg.
- Supported pole size is between $\varnothing 80$ and $\varnothing 200$ mm.
- Pole must be capable of withstanding installation load at least 50kg.

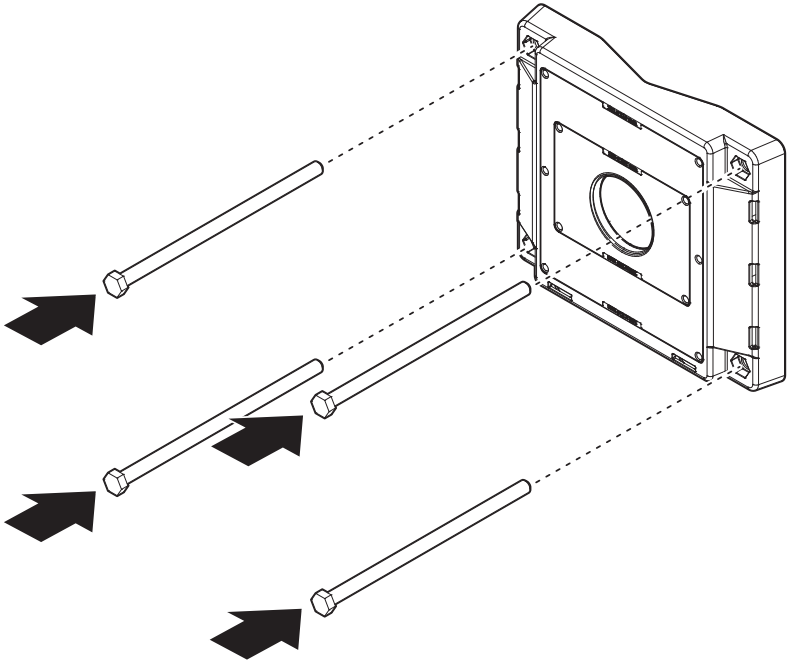


Mounting Hole by Camera Size

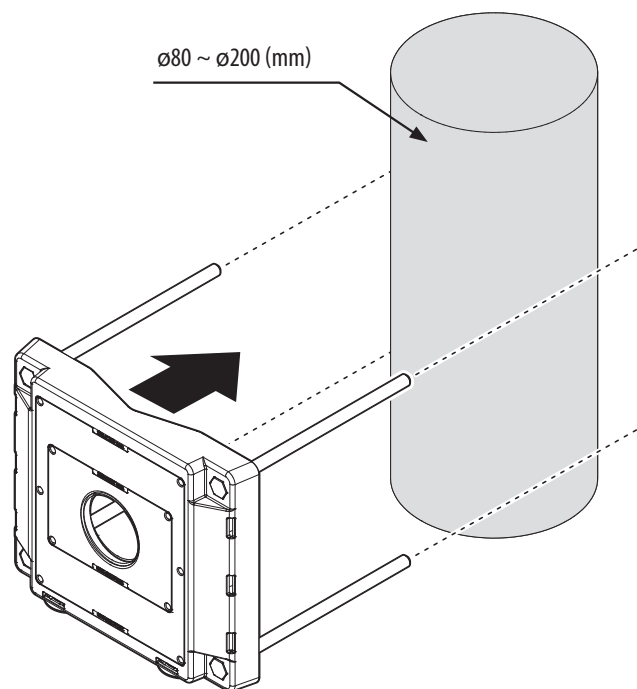
Cabinet (SBP-150NBW) 192 x 210 mm	Camera (TNO-A26081) 158 x 107 mm

Installation

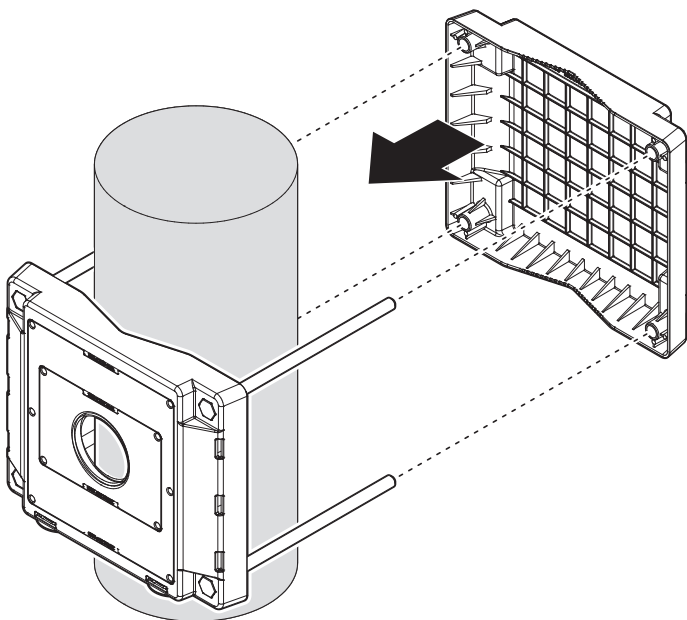
1



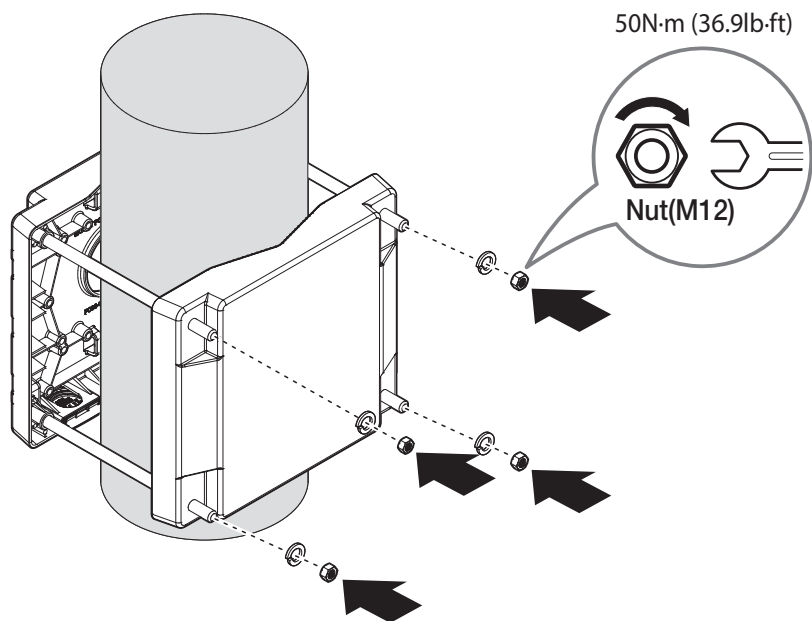
2



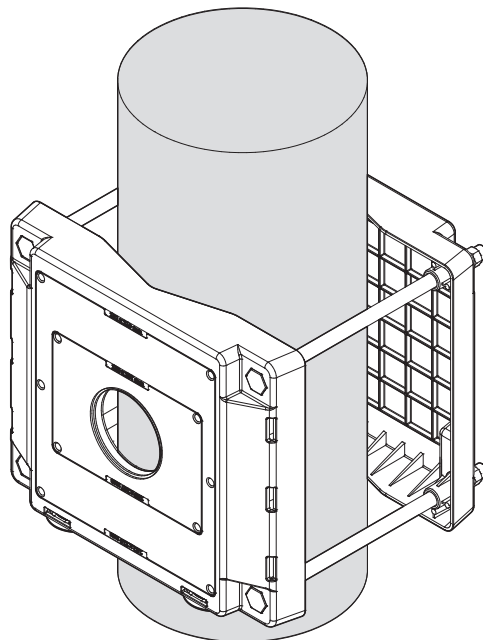
3



4



5



When using Steel Strap



$\varnothing 200 \sim \varnothing 400$ (mm)

